



Isabella County Recreation Master Plan 2024-2028



Adoption: January 16th, 2024



Isabella County Recreation Master Plan 2024-2028

County Board of Commissioners

Tobin Hope - Chair
Jerry Jaloszynski - Vice Chair
Terry Hutchinson
Chris Embrey
Frank Engler
James Moreno
Steve Swaney

Nicole Frost-Administrator/Controller

Isabella County Parks and Recreation Commission Board

Randy Vasold - Chairperson
John Dinse - Vice-Chairperson
Craig Clingan - Secretary
Bob Busch
Ann Silker
Robert Willoughby
Frank Engler
Terry Hutchinson
Jeremy Murphy
Ruth Barrett
Jordan Bruursema

Isabella County Parks and Recreation Staff

Alexis Hansen – Director

Consultant

PM Blough, Inc. Grand Haven, MI

Table of Contents

01 Introduction

03 Community Description

- 03 County Location and Plan Jurisdiction
- 03 Other Government Units Within the County
- 03 Isabella County Population
- 04 Age Distribution
- 05 Race and Ethnic Groups
- 05 Poverty
- 05 Persons with Disabilities

07 Administrative

- 07 Role of the Isabella County Parks and Recreation Commission Board
- 07 Department Authority and Staffing
- 08 Organization Chart
- 08 Parks and Recreation Annual Budget for Expenditures and Revenue Funding
- 09 Role of Volunteers and Organizations in Providing Public Recreation
- 09 Relationship of School Districts and Other Public Agencies Involved in Recreation

11 Recreation Inventory

- 12 County Parks and Recreation Facilities Chart
- 14 County Parks
 - 14 Coldwater Lake Family Park
 - 16 Deerfield Nature Park
 - 18 Maynard S. Gilmore Park
 - 20 Herrick Recreation Area
 - 22 Lawrence A McDonald Wildlife Sanctuary
 - 23 Majeske Landing Access Site
 - 25 Meridian County Park
 - 27 Pere Marquette Rail Trail
- 29 Other Publicly Owned Recreation Facilities
 - 29 Township Parks Chart
 - 30 Chippewa Watershed Conservancy Nature Preserves Chart
 - 31 Chippewa River Water Trail
- 32 Accessibility Assessments
- 35 Status Reports for All Grant-Assisted Parks and Recreation Facilities

39 Planning Process

- 39 Review of Community Recreation Opportunities
- 39 Park Tours, Recreation Inventory, and ADA Assessments
- 39 Review of Public Survey Information
- 39 Mission, Goals, and Objectives
- 39 Draft Document Preparation
- 39 Support from the Isabella County Parks and Recreation Commission Board

41 Public Input Process

- 41 Early Public Input Public Survey
- 41 Thirty Day Public Comment Period
- 41 Advertisement for 30 Day Public Comment Period and Public Hearing
- 41 County Board of Commissioners Public Meeting and Adoption

43 Goals, and Objectives

- 43 Mission Statement
- 43 Goals and Objectives

47 Action Program

- 47 Action Program Chart
-

Introduction



This plan, entitled *Isabella County Recreation Master Plan 2024-2028* replaces the previous plan entitled, *Isabella County Parks, Recreation, and Open Space Master Plan 2019*.

The plan was developed through the guidance of the Isabella County Parks and Recreation Commission and Staff.

The development of this plan has included an extensive process that incorporated several significant planning efforts. A significant electronic public survey was conducted throughout the Fall of 2023 which resulted in 124 respondents participating. This input was integrated into the planning document, Goals and Objectives, and development of the Action Program. This was followed by a 30-day public review and comment period for the final draft document, and a Public Hearing on the final draft plan document at a County Board of Commissioners meeting.

The plan includes a brief description of the Community, a description of the Administrative Structure that supports the public parks, a Recreation Inventory, and the documentation of the Planning Process. A key section in this plan is the Goals and Objectives Section which provides written goals for providing recreational opportunities to the residents. The Action Program Section follows the Goals and Objectives with a listing of proposed projects and programs which will improve and expand recreational opportunities.

The final adopted plan will serve to provide an overall vision and direction for the improvement and development of parks and recreation facilities and programs throughout Isabella County.

Community Description

The Community Description section of the plan provides a brief overview of the Plan Jurisdiction, County location within the State of Michigan, and a basic general overview of the County.

County Location and Plan Jurisdiction

Isabella County is centrally located in the Lower Peninsula of Michigan. The Jurisdiction of this Plan is for the Isabella County governmental unit for the purpose of planning for the future of parks and recreational opportunities within the County.



Other Governmental Units within the County



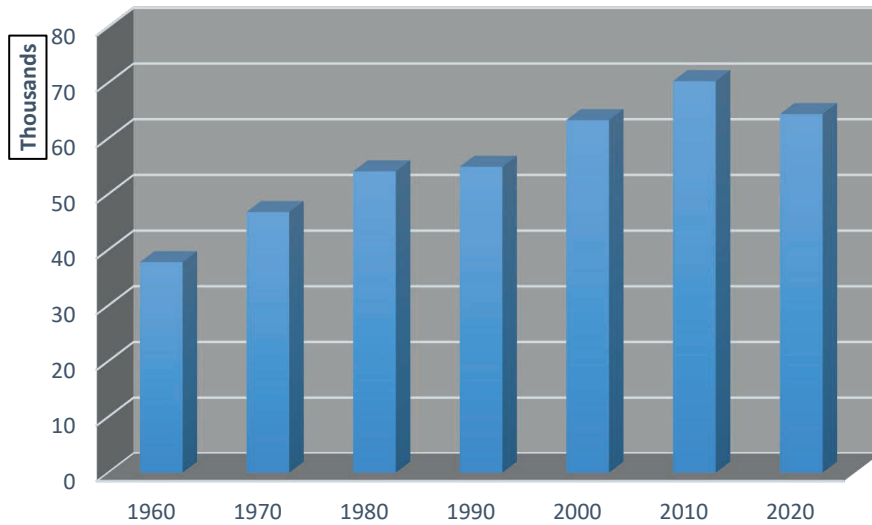
The City of Mt. Pleasant is the largest community in the County and serves as the County Seat. The County is comprised of approximately 578 square miles, of which 573 square miles is land and 5 square miles is water.

Aside from the City of Mt. Pleasant, the City of Clare touches the very northern portion of the County where Business Route 127, US-127 and US-10 converge. Other communities within Isabella County include the Villages of Shepherd, Rosebush, and Lake Isabella, and the unincorporated Villages of Weidman, Winn, Beal City and Blanchard. Sixteen Townships are located within the County.

Isabella County Population

Based on the 2020 U.S. Census, the population of Isabella County was 64,394 persons, and a decrease of 5,917 persons over the decade from 2010, indicating a decline of approximately 8.4% of residents from 2010-2020. The population density is primarily located within the City of Mt. Pleasant, which also includes Central Michigan University, and had a recorded US Census population of 21,688 persons, or nearly 37% of the total County population. Located at the southern end of the County, the City of Mount Pleasant, with Union, Chippewa, and Deerfield Townships contributing suburban areas of the City, account for approximately 64% of the County's population.

County Population Trends 1960-2020



Age Distribution

Based on the 2020 US Census the Median Age within Isabella County is 29 years with an Age Distribution of for the population distribution as shown in the chart below. The low median age of the residents of Isabella County is primarily due to the low median age of the residents within the City of Mt. Pleasant, Central Michigan University, and Mid-Michigan College area, which has a median age of 22.7 years.

<u>Age Range</u>	<u>Number of Residents</u>	<u>Percentage of Population</u>
Under 5 years	3,176	04.9%
5-19 years	13,731	21.3%
20-29 years	13,912	21.7%
30-39 years	7,144	11.1%
40-49 years	6,275	09.7%
50-64 years	10,643	16.6%
65- years and older	<u>9,513</u>	<u>14.7%</u>
	64,394	100.0%

Race and Ethnic Groups

The racial composition of Isabella County is predominately white with Native Americans comprising the largest minority group. The population distribution based on race according to the 2020 US Census is noted below.

<u>Race</u>	<u>Number of Residents</u>	<u>Percentage of Population</u>
White	54,159	84.1%
African American	2,134	3.3%
Native American	2,282	3.5%
Asian	1,117	1.7%
Native Hawaiian	20	0.1%
Some Other Race	742	1.2%
Two or More Races	<u>3,940</u>	<u>6.1%</u>
	64,394	100.0%

The presence of the Saginaw Chippewa Indian Tribe in the community provides a concentration of Native Americans within the County. This comprises approximately 3.5% of the County’s population, not including individuals in the County that consider themselves as two or more races. Within Chippewa Township, 25.3% of the Chippewa Township residents identified as a minority, which specifically included 16.0% as Native Americans.

Poverty

The median household income based on the 2020 US Census data was \$48,840. Approximately 23.6% of the population lives below the poverty level. Nearly one quarter of households in Isabella County have incomes below the poverty level representing one of the highest poverty rates in the State of Michigan.

Persons with Disabilities

Based on the 2020 US Census the percentage of persons with disabilities in Isabella County nearly matches that of the State at 14.4%. The greatest concentration of individuals with disabilities in Isabella County is in the greater Mt. Pleasant area. Not only is Mt. Pleasant area the largest population center of the County, but the area also provides many of the needed services and organizations which can provide a quality living environment to individuals. Several group homes are established in the community, as well as accessible housing within Central Michigan University campus housing.

Administrative Structure



The Administrative Structure section of the plan provides a written description of how the park and recreation functions are carried out in Isabella County.

Role of the Isabella County Parks and Recreation Commission Board

The Isabella County Parks and Recreation Commission Board was formed by a resolution of the County Board of Commissioners in 1967, under Act 261 of the Public Acts of Michigan. General control over the Parks and Recreation Commission remains with the County Board of

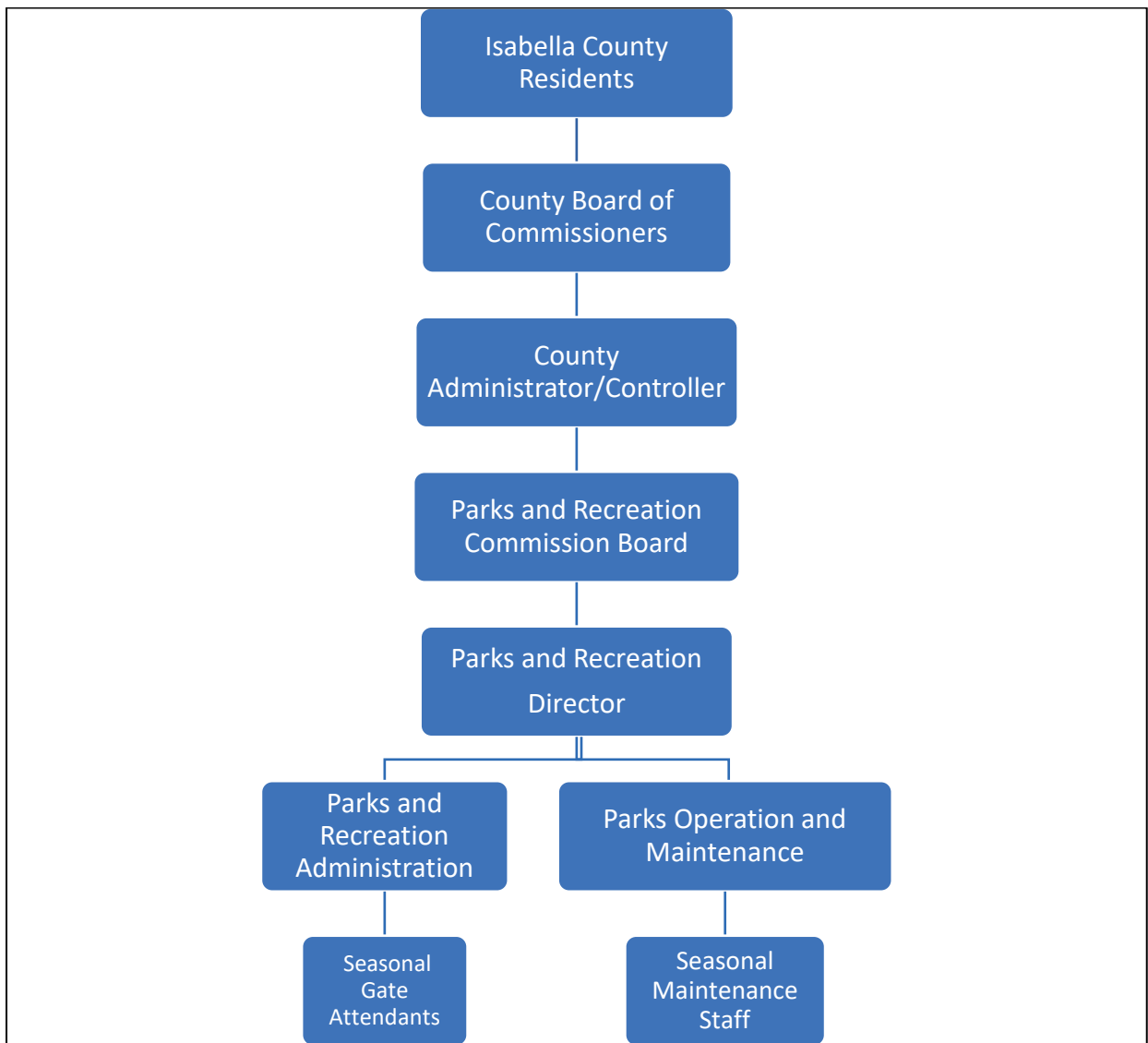
Commissioners, however, the Parks and Recreation Commission Board operates under its own direct supervision. The board is comprised of a ten-member advisory board derived from one representative each from the County Drain Commission, County Road Commission, County Planning Commission and County Board of Commissioners, along with six appointed citizens. The current list at the time of writing of the Commission Board Members may be found on the inside cover of this document.

The Parks and Recreation Commission Board provides recommendations regarding the Parks and Recreation operation and future planning for the parks. Final decisions regarding budgets, capital development, appointment of the Director, rules and ordinances are all functions of the County Board of Commissioners.

Department, Authority and Staffing

The operation of Parks and Recreation within the County is managed by a Director with the County Administrator as the direct supervisor to the Director. The Parks Director manages the Department staff which is comprised of two full-time and two part-time Administrative staff persons, three full-time and five part-time Park Maintenance staff, and additional seasonal maintenance and gate attendant staff. This staff team provides for the overall administration, financial, and maintenance of the park system. Policing and enforcement of rules for visitors is supported by the Isabella County Sheriff's Office with periodic patrols and drive-by services as well as on call by Parks staff for support when needed.

Organization Chart for Isabella County Parks and Recreation



Parks and Recreation Annual Budget for Expenditures and Revenue Funding

The annual budget for the park system is prepared by the Director, reviewed with the Parks and Recreation Commission Board, and formally approved by the County Board of Commissioners. The 2023-2024 budget for expenditures is \$2,261,316 which provides \$1,824,135 for operation and \$437,181 in maintenance funds.

Funding for the operation of the Department is generated from an annual Parks Millage originally approved in 2012 and renewed in 2018 for an additional six years. The millage ballot language was as follows:

For the purpose of operating, maintaining and improving the Isabella County Parks and Recreation Commission parks and programs as provided by PA 261 of 1965, shall the previously voted increase on the Constitutional limitation upon the total amount of taxes which may be assessed in one (1) year upon all property within the County of Isabella, Michigan, be continued and renewed at up to 0.3500 of one(1) mill, (\$0.35 per \$1,000 of Taxable Value), for a period of six (6) years, 2018-2023, inclusive?

The millage rate is 0.35 mils which generates approximately \$804,400 annually based on the 2023-2024 fiscal year. In addition, approximately \$501,520 in 2023-2024 was generated through gate revenues and user fees such as camp site and pavilion rentals.

Grants are an important part of funding Capital Developments. In 2023-2024 grants were received from the following sources:

Grant	Source	Amount
2023 Art From Our Park Event	Michigan Arts & Culture Council	\$ 2,600
Pere Marquette Rail-Trail Beautification	Friends of the PMRT	\$ 1,000
Herrick Recreation Area Development	MDNR SPARKS Grant	\$319,000
Pere Marquette Rail-Trail Beautification	Mt. Pleasant Area Conv. & Visitors Bureau	\$ 5,000
2024 Art from Our Park Event	Mt. Pleasant Area Community Foundation	\$ 3,000
Coldwater Lake Park Sewer Project	Saginaw Chippewa Indian Tribe Funding	<u>\$ 50,000</u>
	Total Grant Funds	\$380,600

Role of Volunteers and Organizations in Providing Public Recreation

Volunteers have been an integral part of the County Parks and Recreation Commission throughout its history. Currently the Isabella Bank Employees comprised of 50-80 bank employees spend a workday helping with fall projects each year.

Relationships with School Districts and Other Public Agencies Involved in Recreation.

As a larger County Park system, there are several school districts located totally within or in a portion of the County. School Districts will utilize the County Parks for outdoor education sessions predominantly at the more nature-based parks. There are not any formal agreements between the Schools and Isabella County at this time.

Recreation Inventory



The Recreation inventory section describes the Isabella County Parks System, additional significant recreational parks and facilities open to the public, and trail systems. In addition, an ADA Assessment of the parks and information regarding previous MDNR grants is included within this section.

The Isabella County Parks System includes a total of eight parks with a total acreage of just over one thousand acres. This acreage includes several public access points to the Chippewa River as well as small inland lakes. The character of the parks is focused on natural vegetation, forests, and wetlands, with an abundance of hiking trails.

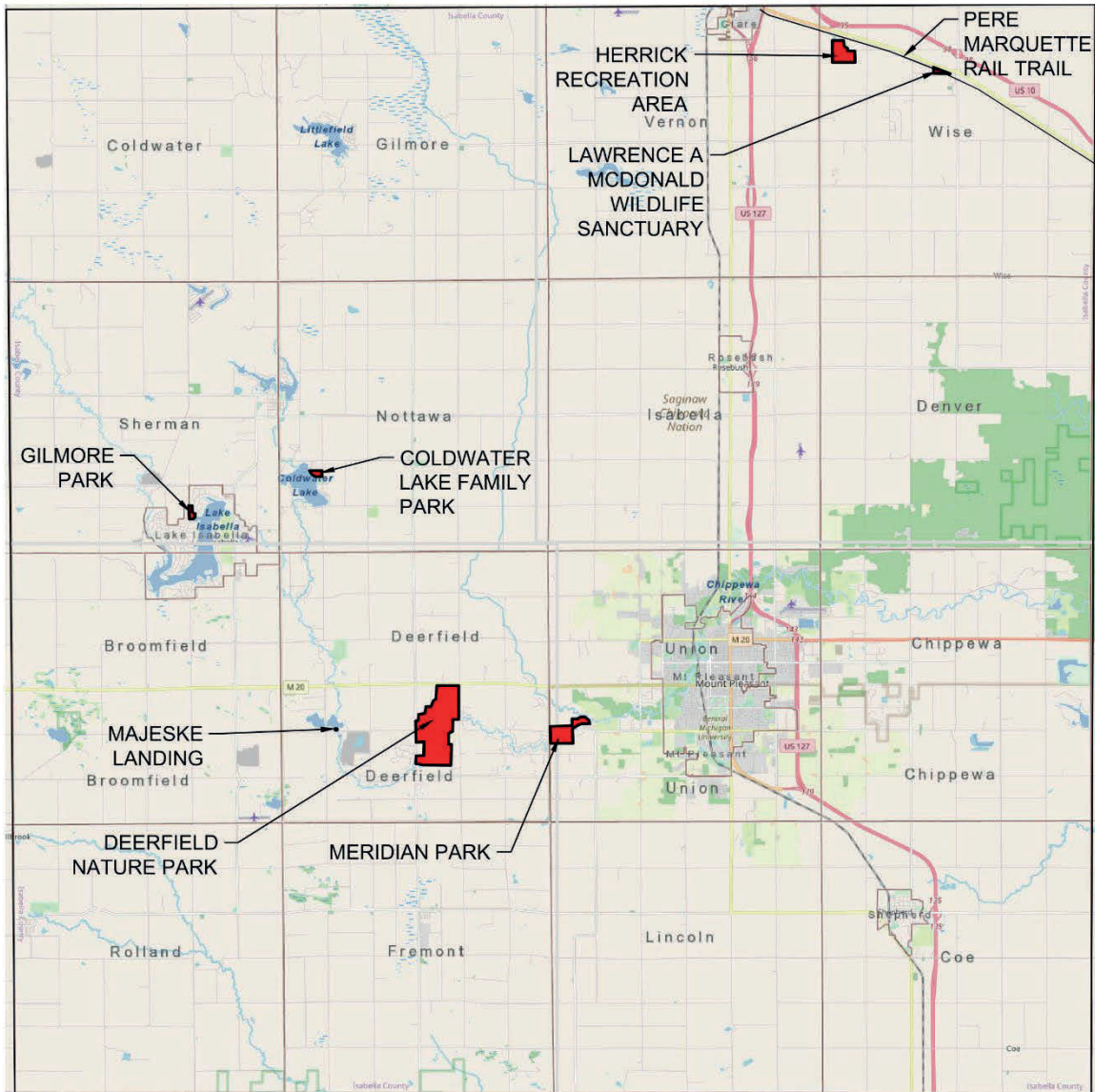
The following pages provide a more specific overview of each of the parks.

County Parks and Recreation Facilities

**Facilities Chart
Isabella County Parks**

Park Name	Acres	Trails (Miles)	Cross County Skiing	Chippewa River Water Trail	Boat/Kayak/Canoe Launch	Water Access	Fishing	Swimming Beach	Ballfield	Disc Golf	Volleyball	Horseshoes	Playground	Picnicking	Picnic Pavilion	Campsites	Cabins	Modern Toilets/Showers	Vault Toilets	Sanitation Station
Coldwater Lake Family Park	28	1															5			
Deerfield Nature Park	591	8	6												5	10				
Maynard S. Gilmore County Park	7														2	73	5			
Herrick Recreation Area	113																			
Lawrence McDonald Wildlife Sanctuary	11																			
Majeske Landing Access Site	2.5																			
Meridian County Park	145	3																		
Pere Marquette Rail-Trail	100	8																		

Isabella County Park System Map



ISABELLA COUNTY PARKS



Coldwater Lake Family Park

Coldwater Lake Family Park is the most developed and intensely used County Park within Isabella County. The park was donated to the County in 1945 by Martin and Senna Robinson as a park. The park is in Nottawa Township on the 294-acre Coldwater Lake. Covering 28 acres, the park offers 98 campsites and 5 rustic cabins for recreation at reasonable prices. The campground and cabins are often rented to capacity on weekends and holiday weeks.

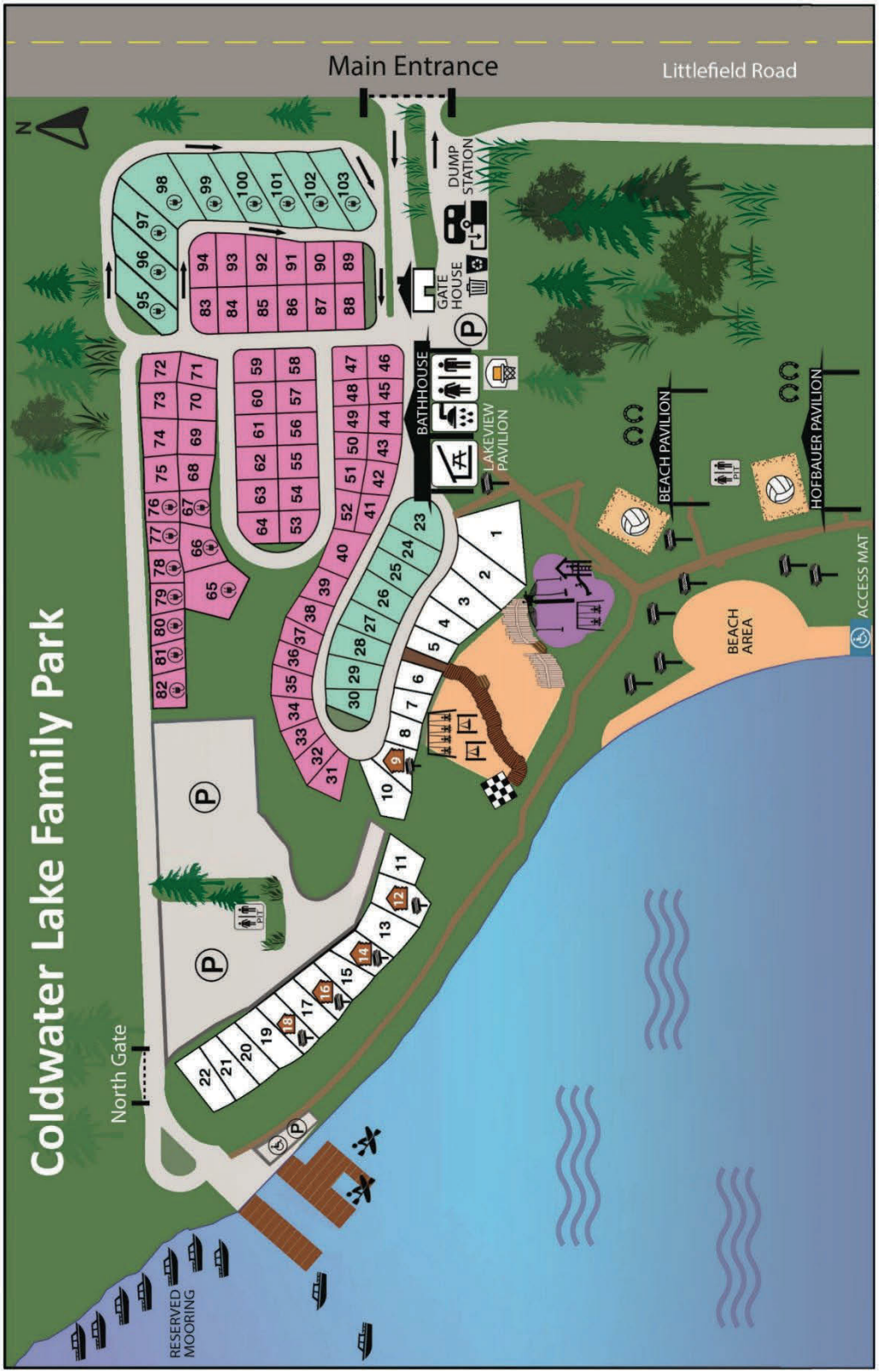
A central public restroom with shower facilities is provided for use by all park visitors that includes an attached open air pavilion. A park office is also on site.

Day Use facilities at the park include three picnic pavilions, an ADA accessible playground, swimming beach, boat launch, canoe and kayak launch, sand volleyball courts, a ballfield, and horseshoe pits.

The park provides approximately ½ mile of frontage on Coldwater Lake that is available for lake viewing and shoreline fishing. Much of this shoreline can be accessed by an ADA accessible pathway.

A public swimming beach serves swimmers from the campground as well as visitors arriving for the day. The beach access includes ADA accessible beach access mats.





1703 N. Littlefield Road, Weidman, MI 48893
 Parks Main Office: 989-317-4083 | Coldwater Gate: 989-644-2388

	ROAD		CONCRETE		MAXIMUM STAY 14 NIGHTS		PULL-THRU CAMPSITE
	PATH		BOAT & CANOE LAUNCH		CABIN SITE		50 AMP ELECTRIC



Deerfield Nature Park

Located within a short drive of nearly two-thirds of the County population, Deerfield Nature Park is 591 acres in size (including property under lease for park use) and offers a variety of recreation opportunities for County residents.

Active recreation opportunities include volleyball, horseshoe pits, a swimming beach, ten rustic camp sites, picnic tables, a sledding hill, five picnic pavilions, two disc golf courses, Deerfield and Wildwood Courses, a land navigation and orienteering course, and parking.

The park is more widely recognized for its passive recreational value. These recreation options include over eight miles of rustic hiking and mountain biking trails, along with groomed cross country ski trails, the Fisher Annex Covered Bridge, two miles of frontage on the Chippewa River, fishing, bird watching opportunities, canoeing, kayaking, and an abundance of wildlife viewing. The Wildwood Pathway, located in Deerfield Park, is a designated National Recreation Trail by the U.S. Department of the Interior. National Recreation Trails are noted for their length, beauty, and degree of maintenance.



Deerfield Nature Park

TRAILS

1	WILDWOOD PATHWAY	2.54 MI
2	RIVER TRAIL	1.47 MI
3	NATURE'S WAY LOOP	0.49 MI
4	RACEWAY PATH	0.50 MI
5	COVERED BRIDGE TRAIL	1.10 MI
6	TWO OAKS CROSSOVER	0.17 MI
7	FIRE BREAK CROSSOVER	0.28 MI
8	FOX RUN CROSSOVER	0.21 MI
9	GOSHAWK LOOP	0.37 MI
10	LEWIS PONTIAC TRAIL	0.21 MI
11	OAK RIDGE	0.49 MI

PAVILIONS

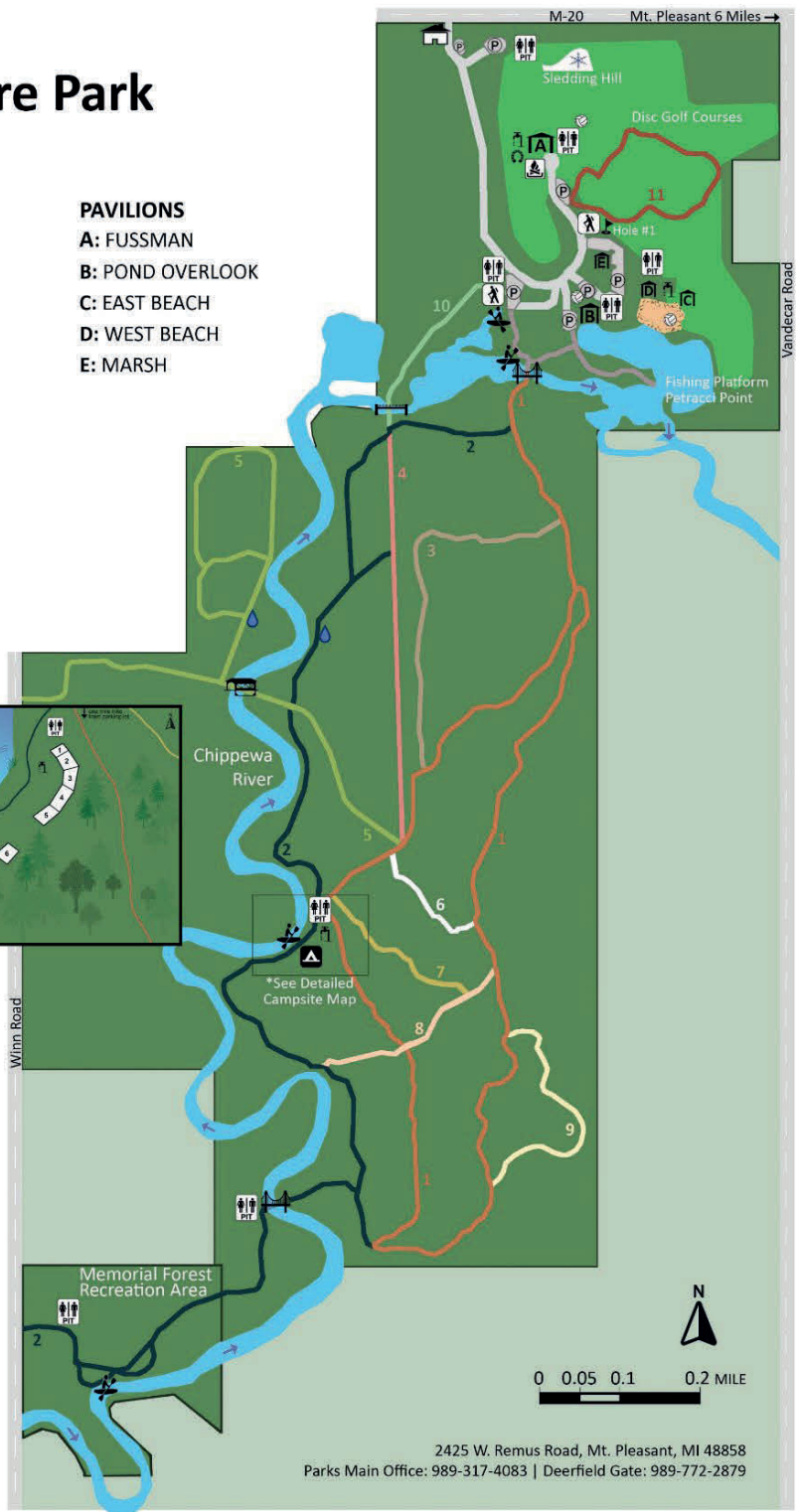
- A: FUSSMAN
- B: POND OVERLOOK
- C: EAST BEACH
- D: WEST BEACH
- E: MARSH

DISC GOLF COURSES

- DEERFIELD COURSE 18 HOLES
- WILDWOOD COURSE 18 HOLES

AMENITIES

- PARKING
- TRAILHEAD
- PIT TOILET
- GATEHOUSE
- PAVILION
- CAMPSITES (10 RUSTIC SITES)
- CANOE LAUNCH
- SHARED WATER (PUMP)
- ARTESIAN WELL
- FIRE PIT
- SWINGING BRIDGE
- COVERED BRIDGE
- LEWIS PONTIAC BRIDGE
- HORSESHOE PITS
- VOLLEYBALL (SAND)
- DISC GOLF
- BEACH



2425 W. Remus Road, Mt. Pleasant, MI 48858
 Parks Main Office: 989-317-4083 | Deerfield Gate: 989-772-2879

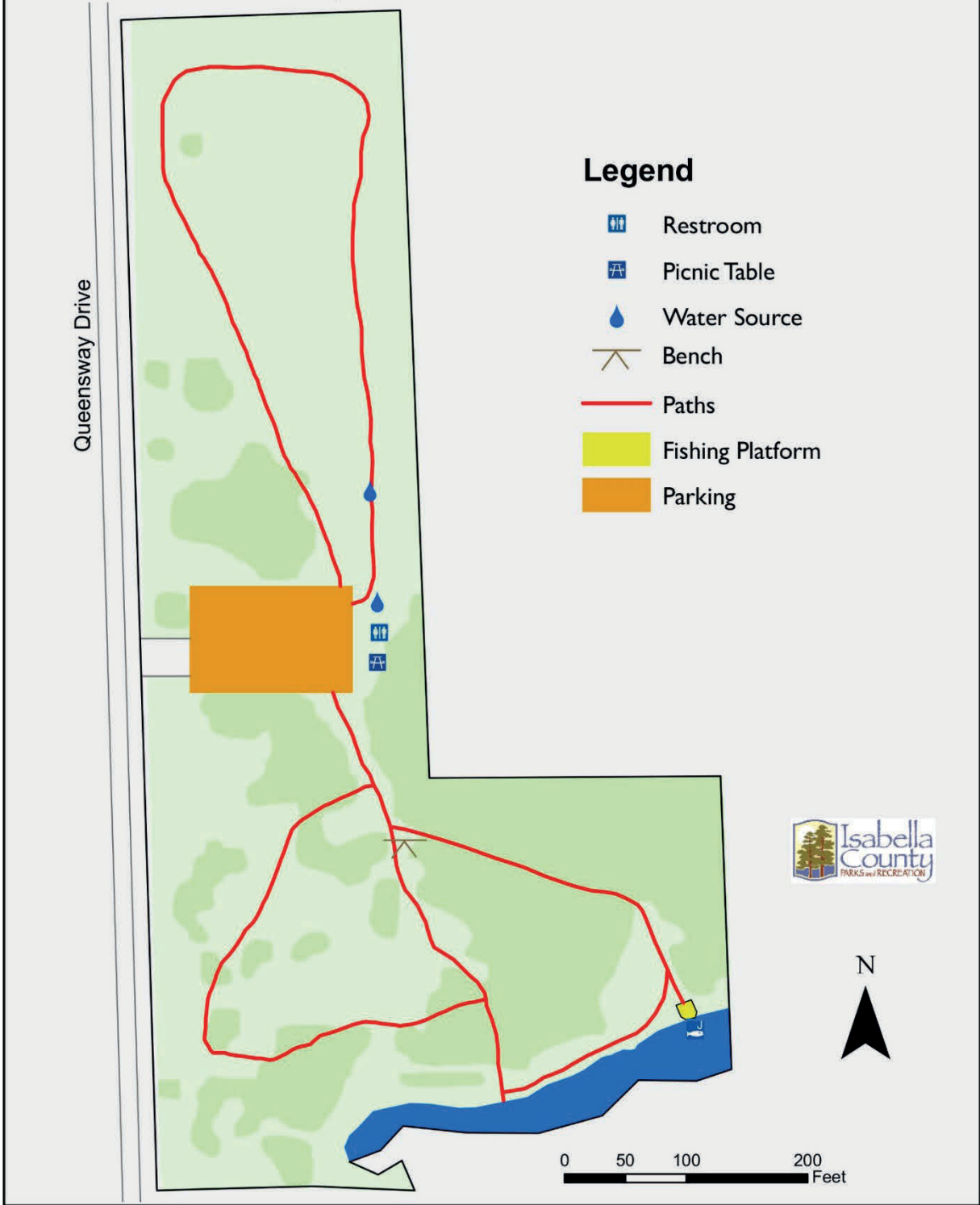
Maynard S. Gilmore County Park

Maynard S. Gilmore Park is a smaller County Park at 7 acres and is the only public park on Lake Isabella. Facilities include a small parking area, a fishing platform, vault toilet and small hiking trail. The park is a popular site for winter ice fishing.

The park was donated to the County by the Lake Isabella Corporation in 1970 with deed restrictions that limit facilities and uses within the park, including not permitting docks or other boat launching activities.



Gilmore Park



Herrick Recreation Area

A popular summer recreation area, the 113-acre Herrick Recreation Area has popular day use facilities for beach swimming and picnicking. The park, built within a former gravel pit, is fed by clean spring water and surrounded by quartz sand. In addition to swimming, visitors can enjoy a large picnic area, two large picnic pavilions, new ADA playground, horseshoes, and sand volleyball. Parking and restroom facilities are provided in the beach area.

The lake provides access to shoreline fishing, small watercraft boating, canoeing, and kayaking. A small watercraft boat launch is available.









The campground provides seventy-three camp sites and five rustic cabins for overnight park visitors. Campers can enjoy the beach and lake facilities within the park.

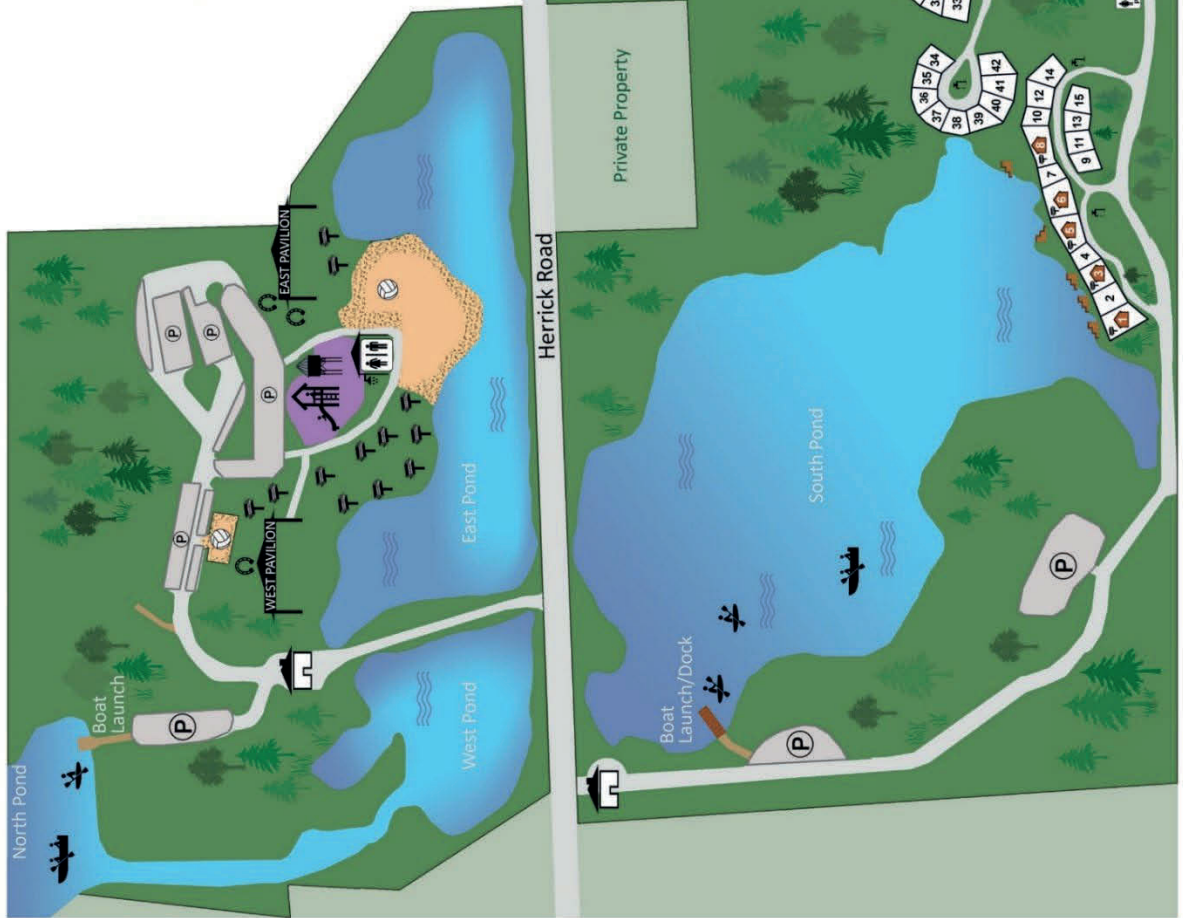
The park was donated by several benefactors including Paul Hubscher, Isabella County Road Commission, and by Ferdinand and Jacob Seibt.



Herrick Recreation Area

6320 E. Herrick Road, Clare, MI 48617
 Parks Main Office: 989-317-4083
 Herrick Gate: 989-386-2010

	SAND OR BEACH		GATEHOUSE
	PLAYGROUND		SHOWERS & RESTROOMS
	ROAD		CABIN CAMPSITE
	GRILL		DUMP STATION



Lawrence A. McDonald Wildlife Sanctuary

The Lawrence A. McDonald Wildlife Sanctuary is a significant wetland located adjacent to the Pere Marquette Rail Trail. The 11-acre park is undeveloped. A footpath crossing the north side of the property connects the wetland to the Pere Marquette Rail-Trail just west of the Loomis Trailhead.

The property was donated to Isabella County Parks by De Etta McDonald, Margarita Hughes, and Dorothy Collins in memory of Lawrence A. McDonald.



Majeske Landing Access Site

Majeske Landing provides access to Hubscher Pit, a 41-acre body of water. The small boat ramp and parking area is located on the Chippewa River approximately 500-feet downstream from the Pit. Shallow river depth limits the size of watercraft able to reach the waters located upstream.

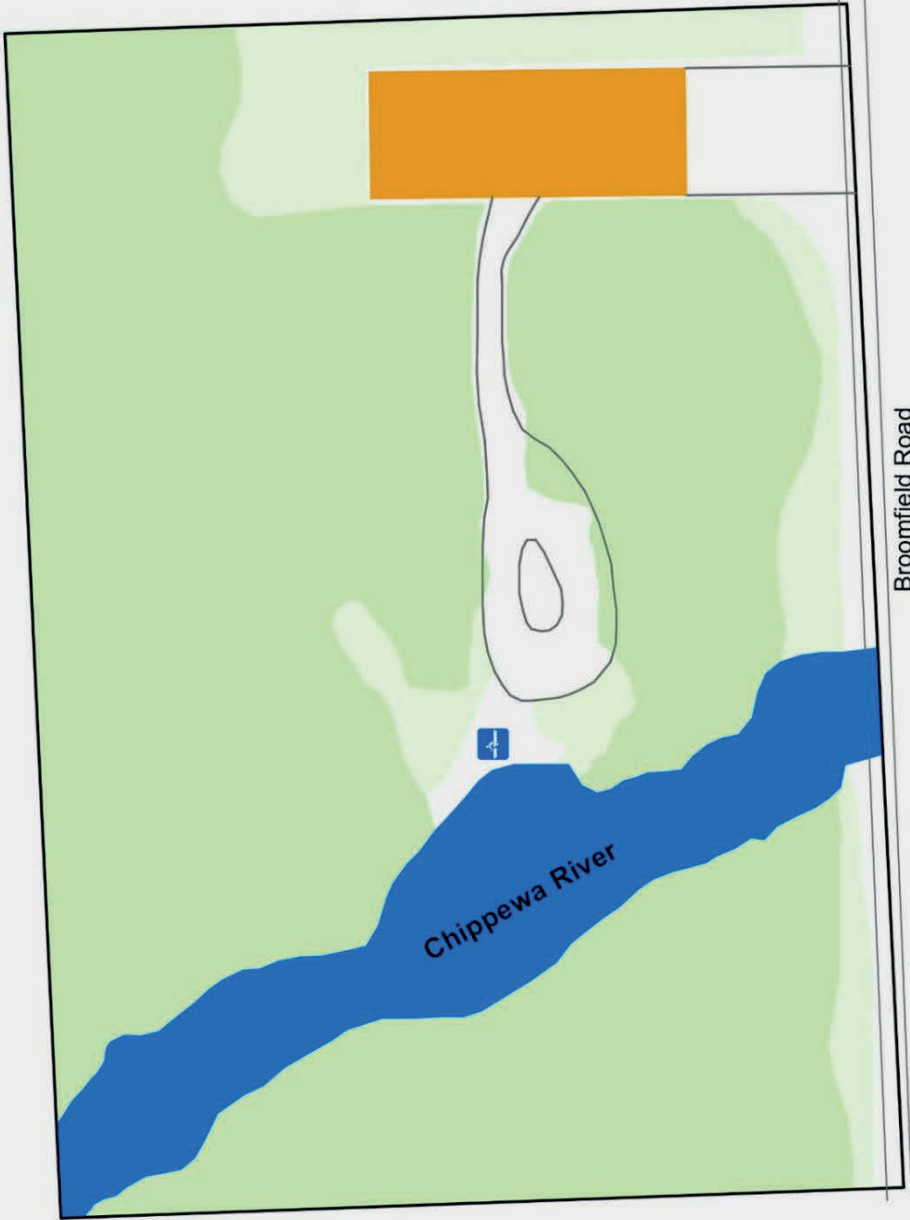
The original two acres of park land on the Chippewa River were donated to Isabella County Parks by Earl and Rebecca Majeske. Paul and Grace Hubscher also donated 100 feet of land (east of Majeske's Landing) to further expand the park.



Majeske Landing



- Legend**
- Canoe Landing
 - Parking



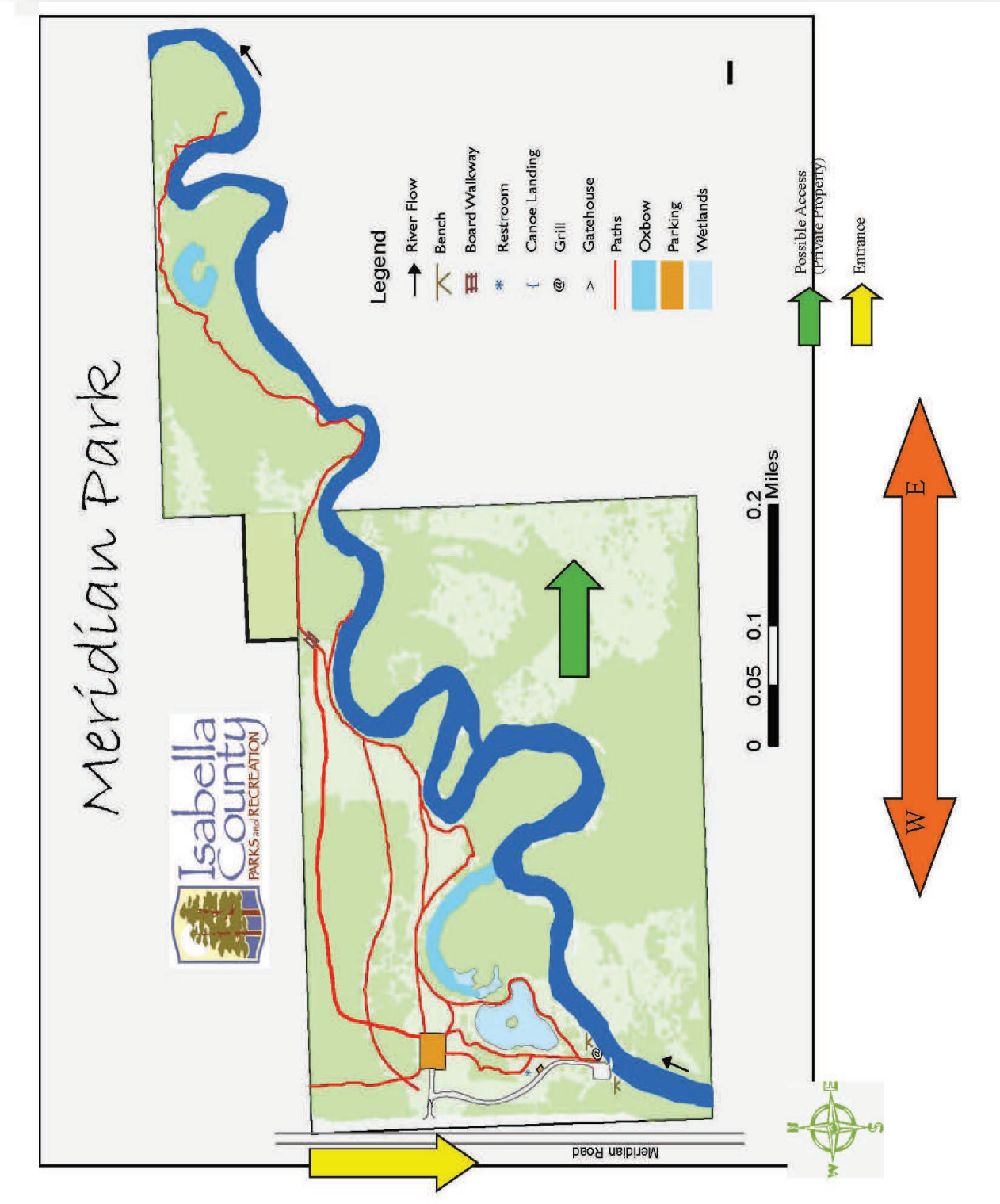
Meridian County Park

Largely undeveloped, Meridian Park is 145-acres of parkland. The park is divided by the South Branch of the Chippewa River from east to west, and part of the southern portion of the site is divided by Johnson Creek. Park access is by a vehicle entrance and parking area that provides access to an extensive trail system for hiking along the Chippewa River. Access to the water is available at several locations along the nearly one-mile shoreline and includes a small drop-in launch for watercraft and floats.

A two and one-half acre wetland mitigation site was developed within the park which provides wetland and wildlife viewing. The parkland was purchased by the County.

Isabella County purchased the original 116.4 acres of land and an additional 37 acres were donated to the County by Byron and Ethel Gallagher, and R.J. and Mary Ann Fisher. In 2021 the Michigan Natural Resources Trust Fund awarded funds to purchase four additional acres to improve access to the southernmost portion of the park. This purchase was completed in 2023.





Pere Marquette Rail Trail

An abandoned CSX railway, formally known as the Pere Marquette Railway, serves as the pathway for the 8.25 mile stretch of the Pere Marquette Rail-Trail located within Isabella County.

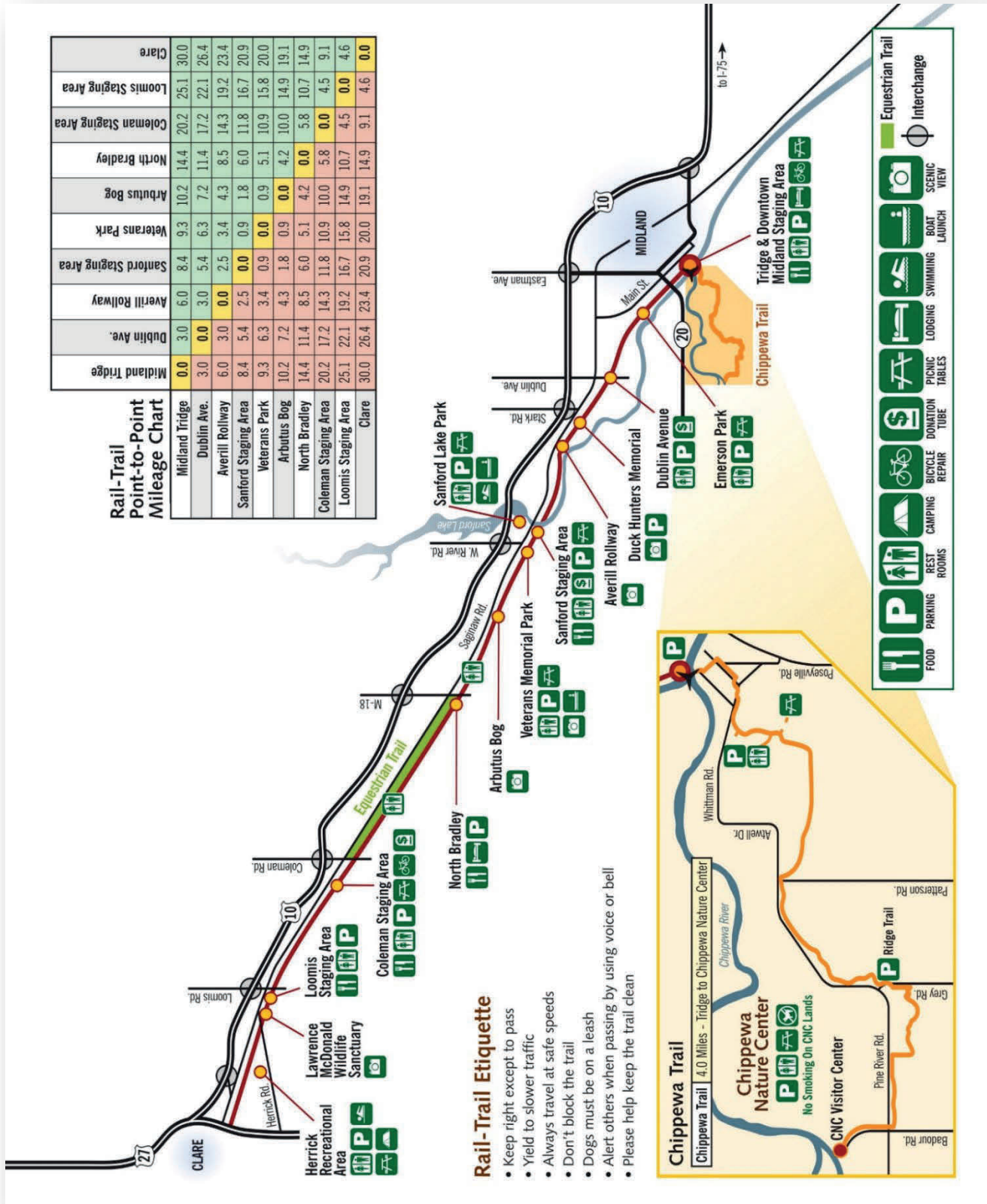
The non-motorized pathway connects the City of Baldwin, Reed City, Clare and Midland in mid-Michigan. The Trail traverses through Vernon and Wise Townships located in the northeastern corner of the County. The trail is comprised of 100.5 acres. Snowmobile use is permitted only on the trail



west of Clare. The trail is located close to the Herrick Recreation Area and adjacent to the Lawrence A. McDonald Wildlife Sanctuary. The nearest trailhead is located in the Village of Loomis.

Isabella County purchased the Rail-Trail property from Midland County for \$10.00 and the development of the trail was completed between 1998 and 2009. The trail is part of an extended network of state and regional trails.

Pere Marquette Rail-Trail Map



Rail-Trail Point-to-Point Mileage Chart

Midland Tridge	0.0	3.0	6.0	8.4	9.3	10.2	14.4	20.2	25.1	30.0	Clare
Dublin Ave.	3.0	0.0	3.0	5.4	6.3	7.2	11.4	17.2	22.1	26.4	Loomis Staging Area
Averill Rollway	6.0	3.0	0.0	2.5	3.4	4.3	8.5	14.3	19.2	23.4	Coleman Staging Area
Sanford Staging Area	8.4	5.4	2.5	0.0	0.9	1.8	6.0	11.8	16.7	20.9	North Bradley
Veterans Park	9.3	6.3	3.4	0.9	0.0	0.9	5.1	10.9	15.8	20.0	Arbutus Bog
Arbutus Bog	10.2	7.2	4.3	1.8	0.9	0.0	4.2	10.0	14.9	19.1	Veterans Park
North Bradley	14.4	11.4	8.5	6.0	5.1	4.2	0.0	5.8	10.7	14.9	Sanford Staging Area
Coleman Staging Area	20.2	17.2	14.3	11.8	10.9	10.0	5.8	0.0	4.5	9.1	Averill Rollway
Loomis Staging Area	25.1	22.1	19.2	16.7	15.8	14.9	10.7	4.5	0.0	4.6	Dublin Ave.
Clare	30.0	26.4	23.4	20.9	20.0	19.1	14.9	9.1	4.6	0.0	Midland Tridge

Rail-Trail Etiquette

- Keep right except to pass
- Yield to slower traffic
- Always travel at safe speeds
- Don't block the trail
- Dogs must be on a leash
- Alert others when passing by using voice or bell
- Please help keep the trail clean

Chippewa Trail
 Chippewa Trail 4.0 Miles - Tridge to Chippewa Nature Center

Chippewa Nature Center
 No Smoking On CNC Lands

CNC Visitor Center

Map showing Chippewa Trail route with various icons for amenities like parking, restrooms, and food. Key locations include Chippewa Nature Center, CNC Visitor Center, and various staging areas.

Other Publicly Owned Recreation Facilities

Owner	Name	Type	Size	Key Features
City of Mount Pleasant				
	Canal Street Park	Neighborhood	1 acre	Open Space
	Chipp-a-Waters	Community	30 acres	Picnic Shelter
	Hannah's Bark Park	Dog Park	3.6 acres	Dog Play
	Horizon Park	Athletic Fields	22.5 acres	Multi-sport
	Indian Pines Park	Nature	80 acres	Trails/River Access
	Island Park	Community	50 acres	Pickleball/Picnic Shelters
	Mill Pond Park	Community	90 acres	Trails/River Access
	Mission Creek Woodland Park	Community/Nature	60 acres	Trails
	Nelson Park	Community	5 acres	Trails/River Access
	Pickens Field	Community	15 acres	Baseball fields
	Potter Playground	Neighborhood	Unknown	Playground
	Sullivan Field	Athletic Field	Unknown	Little League Field
	Sunnyside Park	Community	17 acres	Soccer fields
	Yost Park	Athletic Field	4.5 acres	Baseball field
	GKB Riverwalk Trail	Trail	1.8 mile	Trail
	Mt. Pleasant River Trail	Trail	4.2 miles	Trail
Broomfield Township				
	Broomfield Township Park	Community	10 acres	Baseball/Basketball
	Broomfield Halls Lake	Community	5 acres	Lake access
Coe Township				
	Coe Township Park	Community	Unknown	Pavilion
	Salt River Park	Community	20 acres	Sledding Hill/River Access
	Shepherd Sports Park	Athletic Fields	Unknown	Baseball/Parking
	Shepherd Soccer Fields	Athletic Fields	Unknown	Soccer Fields
Fremont Township				
	Michael Carroll Memorial Park	Neighborhood	10 acres	Baseball Field/Trails
	Winn Community Center	Neighborhood	4.5 acres	Playground/Meeting
Isabella Township				
	Isabella Township Park	Community	18 acres	Athletic fields/Playground
Rolland Township				
	Payden Park	Community	40 acres	Baseball/Playground
Union Township				
	Jameson Park	Neighborhood	Unknown	Softball/Meeting Room
	McDonald Park	Community	15 acres	Sports Fields
Lincoln Township				
	Floyd and Dorothy Sponseller Pavilion	Community	Unknown	Pavilion/Restrooms
Nottawa Township				
	Nottawa Township Park			
Sherman Township				
	Sherman Township Park	Community	Unknown	Baseball/Restroom

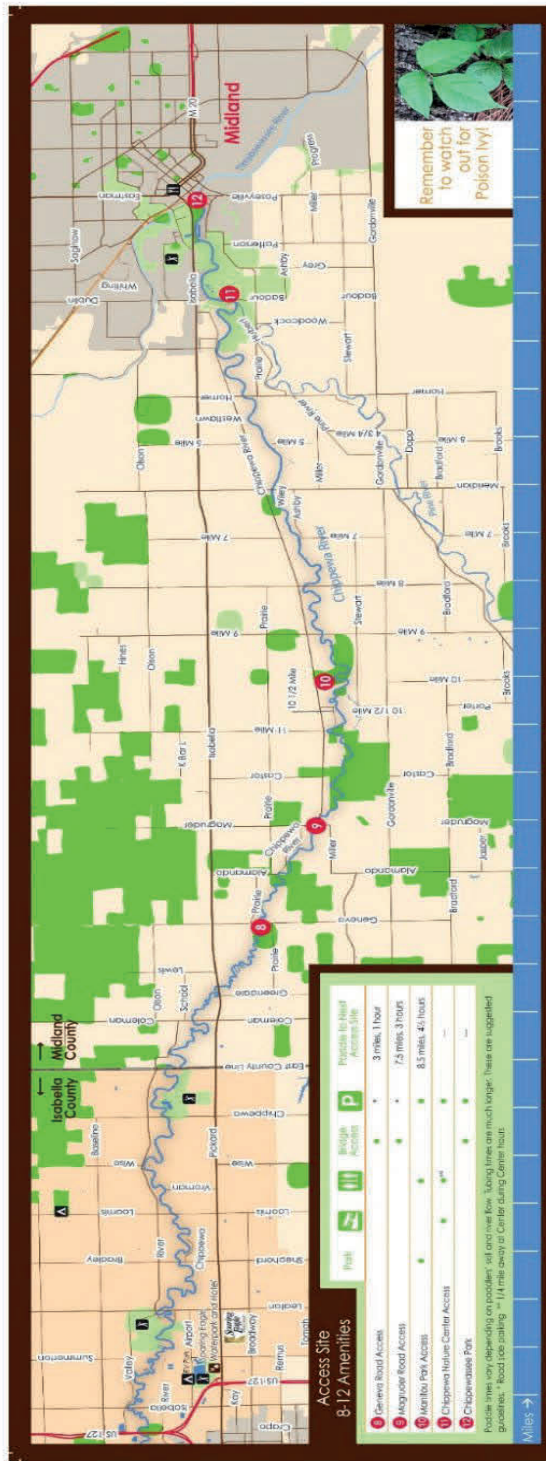
Chippewa Watershed Conservancy Nature Preserves in Isabella County

The Chippewa Watershed Conservancy has attained conservation easements on several properties in Isabella County that provide a public benefit in the context of wildlife habitat and scenic views, but do not provide public access. In addition, the organization owns more than 200 acres of preserves in the County. These properties are managed primarily for wildlife and watershed protection but are accessible to the public.

Nature Preserves in Isabella County

Preserve Name	Location	Acreage
Ball Preserve	Deerfield Township	5
Bundy Hill Preserve	Broomfield Township	100
Florence Maxwell Audubon	Deerfield Township	40
Fox Run Preserve	Broomfield Township	5
Hagen Preserve	Deerfield Township	2
Hiawatha Hills Preserve	Deerfield Township	5
Jack & Cora Neyer Preserve	Deerfield Township	2
Kabana Preserve	Broomfield Township	100
Kjohede's Kove Preserve	Nottawa Township	25
McNeel Preserve	Deerfield Township	8
Meridian Road Preserve	Deerfield Township	1
Neely Preserve	Broomfield Township	22
Riverbank Preserve	Rolland Township	3
Schaftenaar Preserve	Broomfield Township	33
Starks Preserve	Deerfield Township	8
Sylvan Solace Preserve	Deerfield Township	78
Szok Riverbend Preserve	Chippewa Township	3.4
Williams-Blackburn Preserve	Chippewa Township	25
Winawa Preserve	Deerfield Township	2
Winifred Sponseller Preserve	Union Charter Township	13

Chippewa River Water Trail Map



Please use the river wisely

- 1. Leave No Traces**
Glass, Styrofoam, fishing line, and other trash pose hazards to wildlife and other users of the watershed. When paddling, tie loose items into the boat or tubes to keep gear and trash from floating away. Join or organize a river clean-up day.
- 2. Respect Private Property**
A portion of the land within the watershed is privately owned and is designated for public use. Keep paddling.
- 3. Enjoy and Respect Wildlife**
The watershed sustains abundant wildlife. Take time to notice its beauty and learn to identify it at a respectful distance. Look up. You may see an eagle or osprey.
- 4. Value Vegetation**
The many plants, grasses, moxes, trees, and shrubs of the watershed serve the entire ecosystem in many ways. Feed lightly, avoid picking plants and flowers, and use stairs and trails to prevent erosion.
- 5. Think Safety**
Wear a personal flotation device when on the water. Avoid parking on busy roads with narrow shoulders. Tell someone of your paddling plans and when you expect to return. Call 911 if you or someone else is in need of emergency assistance.

2. A Multi-Use Watershed

Within a small portion of the watershed you may find canoeists, kayakers, tubers, anglers in motorized boats, and swimmers, as well as hikers, cyclists, and bird watchers along its banks. Avoid paddling over fishing holes, making too close to swimmers and anglers, or driving while intoxicated. Respect everyone's right to enjoy the watershed.

3. Preserve and Protect

Give back to the watershed. Consider joining a conservancy and be a part of protecting its perpetuity the resources you love. If you own land within the watershed and want to see it preserved for generations to come, consider donation options, or a conservation easement.

Chippewa Watershed Conservancy
www.ChippewaWatershedConservancy.org
The Little Forks Conservancy
www.littleforks.org

4. Safety Disclaimer:

Paddling poses significant potential hazards including risk of injury or death and each person participating in this activity needs to understand the risks involved, obtain the necessary training and take all needed precautions. Users must proceed with care as many of the sections of the river remain isolated and undeveloped. Paddling between Sherman City and Wyman Roads, and between Leelanau Roads, and W-25 and Geneva Road is often challenging due to downed trees with this project makes only representation and specifically disallows any reliance on any statement contained herein, nor assumes any responsibility or liability for property damage, injury, loss, or death resulting directly or indirectly from the use of this guide, websites, links or paddling in the area.

5. Contact Numbers:

EMERGENCY - 911
Chippewa Nature Center 989-431-0830
Isabella County Central Dispatch 989-773-1000
Isabella County Parks & Recreation 989-772-0811/540
Mecosta County Central Dispatch 231-794-4811
Midland County Central Dispatch 989-839-6444
Midland County Parks & Recreation 989-832-6874
Midland Parks and Recreation 989-837-6930
Mt. Pleasant Parks and Recreation 989-779-5328

6. Project Partners:

Bay Area Community Foundation
Central Michigan University
Chippewa Nature Center
Chippewa Watershed Conservancy
Isabella County Community Development Department
Isabella County Parks & Recreation Department
Mt. Pleasant Parks & Recreation Department
Saginaw Bay Watershed Initiative Network
Saginaw Chippewa Indian Tribe
The Little Forks Conservancy
Union Charter Township
University of Michigan-Flint

7. Historical Points of Interest

Drew Dam
A sawmill was located here according to the 1879 edition of the Chippewa River Directory. Although some tracks have been removed in the center, the water flows rapidly and it should be portaged (left).

Former Chinese Road Bridge
Said to have been destroyed in the wreck of a runaway milk truck in the 1950's. It was never replaced and the bridge remains visible on both sides of the river bank.

Mt. Pleasant Mill Pond
The site of several sawmills from the 1850's-1870's (including the horseshoe mill). Much of the original mill pond disappeared via siltation over the years. The dam was removed in 2002.

Former Isabella City Dam and Indian Mills
A sawmill, a gristmill, a blacksmith shop, and the Council House of the Saginaw Chippewa Indian Tribe formed the heart of the original settlement from 1858-1888. This site served as the county seat until July 12, 1866.

Accessibility Assessments

The *Guidelines for the Development of Community Parks and Recreation Plans* prepared by the Michigan Department of Natural Resources Grant Management Division requires the completion of an Accessibility Assessment based on the 2010 ADA Standards for Accessible Design as a minimum and although it is not required for Title II and Title III communities, the Guidelines for Outdoor Developed Areas may be referenced.

The County included future Goals and Objectives for improving ADA accessibility and universal accessibility through renovation and future projects. Refer to the Goals and Objectives section for more information.

Within the Action Program section of the plan, the proposed project list includes a wide variety of needed projects that have been identified and prioritized as the highest priorities for each of the park. Most all of these projects include aspects that will increase accessibility throughout the parks as funding and implementation allows.

ADA Accessibility Review of Each Park

An assessment was completed in each park during the individual park tours and the results are included in this plan section. The MNDR further suggests within its Guidelines that the Recreation Inventory includes that each facility be compared to the 2010 ADA Standards for Accessible Design and at a minimum given a ranking from 1-5 with the following rankings:

- 1=None of the facilities meet the accessibility guidelines.
- 2=Some facilities meet accessibility guidelines
- 3=Most facilities meet accessibility guidelines
- 4=The entire park meets accessibility guidelines
- 5=The entire park was developed using principles of universal design

Individual tours of each park were completed regarding ADA accessibility. Isabella County Parks were all generally planned and constructed prior to the ADA and universal accessible guidelines for parks and recreation facilities and are therefore not very accessible by today's standards. All new park projects are being designed to meet or exceed the U.S. Government Americans with Disabilities Act (ADA) standards for recreational facilities with an emphasis on the State of Michigan's movement towards universal accessibility for public recreation. These new and renovated facilities are allowing the County to move towards new accessible facilities as funding is allowing for the park renovations.

A summary of each park is given below.

Coldwater Lake Family Park

Coldwater Lake Family Park is a large multi-use park that provides both day-use and campground facilities. The park has a newer accessible restroom building with an attached pavilion which is ADA accessible. There is also an accessible play area within the park and walkway along Coldwater

Lake. However older facilities, including facilities such as the campground, rental cabins, and beach, are not ADA accessible. Each area of new park renovation has been focusing on constructing accessible facilities. The accessibility grade is a 2-Some facilities meet accessibility guidelines.

Deerfield Nature Park

This 591-acre park is a large recreational area for the County Parks System and is a focus for both active and passive recreation. At this time, ADA accessibility is very limited within the park due to the age of the existing features. Accessibility will continue to be improved within the park as renovations continue over the next few years. The accessibility grade is a 1-None of the facilities meet accessibility guidelines.

Maynard S. Gilmore County Park

Gilmore Park is a smaller 7-acre County Park with parking, trails, and access to Lake Isabella. Currently the park is not ADA accessible. Strides were being made with a larger vault toilet, and a lake viewing dock with a ramp, but none of the facilities meet ADA guidelines. The accessibility grade is a 1-None of the facilities meet accessibility guidelines.

Herrick Recreation Area

Herrick Recreation Area is a 113-acre day use and campground facility. At this time, ADA accessibility is very limited within the park due to the age of the existing features. The day use end of the park has a swimming beach, restroom, two pavilions, and play area. This area was recently renovated with a new ADA accessible playground. Accessible parking and connecting walkways are planned. The adjacent restroom building is also accessible. Accessibility will continue to be improved within the park as renovations continue over the next few years. The accessibility grade is a 2-Some facilities meet accessibility guidelines.

Lawrence A. McDonald Wildlife Sanctuary

Lawrence A. McDonald park is an 11-acre wetland adjacent to the Pere-Marquette Rail-Trail. The park and wetland area is undeveloped and therefore does not have a rating or could be considered a rating of 1-None of the facilities meet accessibility guidelines.

Majeske Landing Access Site

Majeske Landing is a small 2.5-acre site providing direct access to the Chippewa River and Chippewa River Water Trail and shoreline fishing. Facilities include a small parking area and an informal launch area for small watercraft or floats. Currently an assigned accessibility grade of 0-None of the facilities meet accessibility guidelines.

Meridian County Park

Meridian County Park is a 145-acre site providing outdoor recreation through hiking trails and Chippewa River Access for viewing, fishing, and water access. Currently none of the existing facilities are ADA accessible. Future projects are expected to include ADA parking, vault toilet, accessible pathway and viewing at the Chippewa River. The accessibility grade is a 0-None of the facilities meet accessibility guidelines.

Pere Marquette Rail-Trail

Approximately eight miles of the Pere Marquette Rail-Trail are located within Isabella County and are owned and maintained by the County. The majority of the trail surface and facilities areas are accessible. As renovations and improvements are made to the trail, accessibility will continue to increase on the Rail-Trail. The accessibility grade is a 3-Most facilities meet accessibility guidelines.

Status Report for all Grant-Assisted Parks and Recreation Facilities

Every five years, the MDNR requires all communities that have received previous recreation grants of the various programs to provide an update as to the status of these funded acquisitions and programs. The following is a list of the previous grants of Isabella County dating back to 1975.

See Status Report Chart on the next page.

**Status Report for all Grant-Assisted Parks and Recreation Facilities
MDNR Grant Funding**

Grant Number	Program	Park/Project Name	Project Type	Year	Amount	Status	Scope	Current Use
TF21-0079	MINRTF	Meridian Park Acquisition	Acquisition	2021	\$30,000.00	Grant Closed	Acquisition of 4 acres to expand the 149 acre Meridian Park. This 4-acre parcel was owned by a neighboring farmer and is on the west side of the park. It is a natural area with native foliage, wildlife habitat and large pine trees. This acquisition provided for the conservation of a natural area that added better access, including additional trails for park visitors, along with improved access for management activities.	Expanded natural area of the park.
RP18-0017	Recreation Passport	Coldwater Lake Family Park Campground Improvements	Development	2018	\$150,000	Grant Closed	Development included campground improvements at Coldwater Lake Family Park. The improvements included new and reorganized campsites to provide pull through sites, new gravel drives, electrical upgrades from 30 amp to 50 amp service at each site and new water risers at each new/re-organized site.	All facilities are in full use.
26-01752	LWCF	Coldwater Lake Park Playscape Development	Development	2015	\$50,000.00	Grant Closed	The project developed a new universally accessible playground at Coldwater Lake Family Park	Playground in full use.

TF03-068	MINRTE	Coldwater Lake Park	Development	2003	\$211,500.00	Grant Closed	Renovate existing bathroom, construction of a new bathroom, gatehouse and barrier-free walkways, upgrade campsites to barrier-free standards, and installation of two interpretive areas at Coldwater Lake Park.	All facilities are in full use.
TF98-009	MINRTE	Pere Marquette Rail-Trail	Development	1998	\$482,762.00	Grant Closed	Development of a 4-mile section of the Pere Marquette Rail-Trail in northeast Isabella County, extending from the eastern county line through Loomis.	All trail areas are in use.
TF95-085	MINRTE	Herrick Recreation Area	Development	1995	\$155,100.00	Grant Closed	Improvements and accessibility modifications at Herrick Recreation Area, including beach bathroom, entrance booth, lifeguard station, fencing, and paved walkways.	All facilities are in use except for the lifeguard stand that was removed as being obsolete.
TF94-120	MINRTE	4-H Camp Acquisition	Acquisition	1994	\$187,500.00	Withdrawn	Purchase 35 acres of property belonging to the Bay/Isabella 4-H Camp Council for a natural area with 209 feet of frontage on Coldwater Lake.	Not Acquired
TF90-037	MINRTE	Fisher Annex Purchase	Acquisition	1990	\$506,300.00	Withdrawn	Purchase 160 acres with a large wetland area and one-half mile frontage on the Chippewa River.	Not Acquired
BF89-066	Bond Fund	Herrick County Park Development	Development	1989	\$135,000.00	Grant Closed	Develop picnic area and boat launch, and improve campground to add electricity and water.	Picnic area, boat launch and campground are in full use.
26-01463	LWCF	Coldwater Lake Family Park Improvement	Development	1986	\$80,000.00	Grant Closed	Replace electrical system, 5" water well, bathroom modernization, picnic equipment, youth theme playground, water fountain, picnic shelter, 23 new campsites, LWCF sign.	Facilities are in full use.
26-01278	LWCF	Herrick Park	Acquisition	1983	\$21,786.00	Grant Closed	Acquire 13 acres for campground comfort station, well, and utilities and site development.	Park is open to the public.

TF68	MNRTF	Meridian Park Acquisition	Acquisition	1978	\$98,300.00	Grant Closed	To acquire 154 acres with 7,000' water frontage on Chippewa River for Isabella County Park. (\$86,500 additional LW funds included with TF grant).	Park is open to the public.
26-01043	LWCF	Meridian Park Acquisition	Acquisition	1978	\$87,096.85	Grant Closed	Acquire land in section 19, 30, for outdoor recreation, land acquired in fee, subject to all rights and reservation of record: 150 acres	Park is open to the public.
26-01023 S1	LWCF	Deerfield Park	Development	1977	\$43,299.52	Grant Closed	Entry building, electrical service, beach, 3 parking lots, gravel road, privies, picnic shelter/equipment, well w/hand pump, wood chip paths, road culverts, canoe docks, launches, fencing, trash cans, LWCF sign	Road, gravel parking lots, entry building, well, pathways, fences are all in use. Trash cans have been replaced. Canoe docks/launches have been replaced.
26-00572	LWCF	Herrick Park	Development	1975	\$73,570.56	Grant Closed	Road, parking, camping area, picnic area, utilities, 3 toilets, beach house, entry control building, sidewalks, seeding and landscaping fencing, boat dock, gates, and LWCF sign.	Beach house has been replaced. Other facilities are in use.

Planning Process

The Planning Process section of the plan provides a description of the process completed by the community in developing the plan and establishing the future vision based on the unique needs of the local community. The information incorporated into the plan includes descriptions of each of the steps, important meeting summaries and minutes, public advertisements, copies of the adoption resolutions, and Michigan Department of Natural Resources submittal information.

Review of Community Recreation Opportunities

A review of the County-wide recreational opportunities provided by the County, cities, townships, State of Michigan, land conservancy and institutions such as Central Michigan University was completed. Information gathered allowed for viewing the extensive public lands throughout the County as well as natural, passive, and active recreation opportunities. This factual information provided a planning foundation for how the County can continue to uniquely meet the needs of the residents, and work to fill voids in different recreational activities at a County level.

Park Tours, Recreation Inventory, and ADA Assessments

As part of the planning process, each county park was toured by County staff and the planning consultant. Based on this tour an assessment was completed which included an inventory of existing facilities, current conditions of the facilities, review of potential future ideas and project needs, and an assessment of each park regarding the Americans with Disability Act (ADA) standards for public parks. This input was vital to the development of the Goals and Objectives as well as the Action Program.

Review of Public Survey Information

The County Parks staff developed and administered a County-wide public survey to collect input from the local residents regarding the future development of the Isabella County Parks System. A report of this survey and the data results are included in the rear of this document.

Mission, Goals and Objectives

Mission, Goals, and Objective statements were updated to reflect the information and data gathered. The purpose of these statements is to provide the framework for the future of parks and recreation within the County as they help to prioritize projects and activities which will best aid in achieving these ambitions. The identified Mission, Goals, and Objectives are included within this plan for further review.

Draft Document Preparation

A draft plan document was completed and reviewed by County Park Staff. Revisions were incorporated into the plan based on comments received.

Support from the Isabella County Parks and Recreation Commission Board

The Plan was reviewed and recommended by the Parks and Recreation Commission at their January 2024 Special Meeting by passing a motion of support recommending adoption by the County Board of Commissioners.

Public Input Process

The Public Input Process provided several opportunities for community input.

Early Public Input Public Survey

Input from Isabella County residents was sought through a electronic survey performed by Isabella County Parks staff. People were reached directly through email, Facebook, announcement flyers, including postings within the Isabella County Parks office. The electronic survey was also supplemented in PDF format on the website, and a paper copy was available at the parks office. Fourteen responses were received in the PDF version. The survey was open to the public from September 28, 2023 until November 5, 2023 during which 124 citizens responded to the survey. A complete summary of the survey and responses is included in Appendix A, the attachments at the end of the document.

Thirty Day Public Comment Period

The completed draft plan was made available for public review and comment for a period of at least thirty calendar days. The plan availability was advertised in the Morning Sun and a copy of the advertisement is included in this section. The public was invited to submit comments in writing or to appear in person at the Public Hearing.

Advertisement for Thirty Day Public Comment Period and Public Hearing

The following public notice appeared in the Morning Sun announcing the Thirty Day Public Comment period from December 12, 2023, to January 15, 2024 with a public hearing to be held on January 16, 2024 at the regular County Board of Commissioner's Meeting.

County Board of Commissioners Public Meeting and Adoption

A Public Hearing was held at the Isabella County Board of Commissioners prior to the Resolution adopting the plan on January 16, 2024.

Goals and Objectives

Mission Statement

Our mission is to actively promote healthy and enjoyable lifestyles for all residents and visitors of Isabella County by providing quality facilities and diverse recreation opportunities through the responsible management of human, financial, and environmental resources while promoting conservation of land, resources and the environment.

Goals and Objectives

Developing goals and objectives is an important part of the recreation planning process. The main goal of the Isabella County Parks and Recreation Department is to provide recreational opportunities for the County residents. More specific goals are based on public input, the demographic characteristics of the population served, and the physical and environmental characteristics of the county.

Goals are overarching and general, while objectives carry out the purpose of the goal. The Action Program identifies specific items to be completed in achieving the Goals and Objectives. The Action Program can also include organizational, staffing, programming, public information, and operation and maintenance actions. Isabella County formulated the following goals and objectives based upon input received through its various methods of community input, analysis of ADA accessibility, recreation trends, existing natural resources, and the characteristics of the population.

GOAL 1

Provide broad community-based recreation opportunities in County parks for all residents of Isabella County that improve the overall quality of life and provide a means for social interaction.

Objectives

1. Continue to improve accessibility within all parks by incorporating Universal Design in all new amenities and updating existing amenities as appropriate and as funding is available.
2. Upgrade the park facilities to improve functionality and provide quality park experiences.

Comments and Justification

Isabella County Parks provide residents and visitors an opportunity to enjoy the outdoors for activity, leisure, and socialization. The Parks and Recreation Department desires to continue offering opportunities through a variety of park amenities that appeal to a broad cross-section of the population. It is important to note that many persons with disabilities have a need for accessible facilities. Isabella County desires to be sensitive to the needs of all residents and therefore to improve accessible park facilities.

The County also desires to keep its parks in proper working order and provide functional improvements. Keeping paths maintained, adding restrooms, updating existing infrastructure, or adding utilities are all examples of tasks/projects that will make the parks pleasant places to visit.

GOAL 2

Preserve and protect open space and significant natural resources in Isabella County.

Objective

Identify open areas for future preservation and/or conservation.

Comments and Justification

There are significant woodlands and waterways within Isabella County. County officials and residents realize that these natural resources cannot be replaced or duplicated. If future generations wish to enjoy those same elements of nature, it is in the community's best interest to use public means to preserve and protect the natural resources.

GOAL 3

Provide additional opportunities that create access to Isabella County's lakes and rivers.

Objective

Continue to construct water access sites at lakes and on the Chippewa River especially to provide new Universally Accessible water access where and whenever possible.

Comments and Justification

Many public input comments were received about increasing access to the Isabella County lakes and rivers. These are untapped resources that can be enjoyed for active and passive recreation such as fishing, canoeing, kayaking, tubing, water and wildlife observation, etc.

GOAL 4

Continue to maintain and add non-motorized pathways across the County and within the parks.

Objectives

1. Create new non-motorized pathway connections that work to achieve regional tri-county recreational objectives.
2. Improve existing trails and non-motorized pathways.

Comments and Justification

Residents enjoy the non-motorized pathways in Isabella County, and many expressed a desire to extend existing pathways and to create additional pathways in the County. Isabella County coordinates working with Midland County on a regional pathway to consider ways to connect the communities and resources further with non-motorized pathway connections. The Parks and Recreation Commission desires to lead Isabella County toward doing its part in this initiative. The County also wishes to add pathways within its existing parks, while providing necessary maintenance to existing pathways to provide safe, accessible, and quality trails.

GOAL 5

Protect and Improve the Natural Resources of the Parks

Objectives

1. Control/eliminate invasive species on park property.
2. Work closely with municipalities, businesses, and individuals, to manage the use of the Chippewa River and other natural areas.

Comments and justification

Practice responsible management of natural resources in order to provide quality park experience to residents and visitors and to protect and preserve County Park properties for the enjoyment of future generations.

GOAL 6

Promote and enhance the financial stability of the Isabella County Parks and Recreation System.

Objectives

1. To maintain the existing and future park millages to support the operation and development of the County Park system.
2. Investigate additional park usage to increase park visits and income.

Comments and justification

Many public input comments were received about the Isabella County Parks as key recreational areas, but in need of improvements. Isabella County prides itself in beautiful public and private greenspace and the parks are no exception. The Parks Department wants to keep the facilities attractive and functional for generations to come. As the Parks and Recreation Department has developed and acquired more facilities there is an increasing need for funding for ongoing maintenance and upgrades. Additional sources of funding and income would be very beneficial for the County Parks and Recreation Department. These may include additional income generating facilities at the parks.

Action Program

The Action Program section of the plan provides an overview of the envisioned projects within the parks over the next five years. The projects have been identified by priorities determined in synthesizing the information gathered on the park site tours, public survey results, staff input, and reflecting the Goals and Objectives determined as a part of the planning process. Below is the Action Program list by parks.

Park Name	Proposed Action	Project Description
Coldwater Lake Family Park		
Coldwater Lake Family Park	Remodel Cabin Interiors	Existing cabins are very popular but are in need of interior renovations including ADA accessible beds and seating.
Coldwater Lake Family Park	Cabin Exterior ADA Access Pathways and Patios	Construct new exterior patios and walkways to provide access from parking areas to and into cabins, ADA accessible picnic tables, grill, fire ring, and lake viewing. ADA accessible parking.
Coldwater Lake Family Park	Campground Electrical Improvements	Convert existing campsite electrical services to 50 amp services.
Coldwater Lake Family Park	ADA Accessible Camp Sites	Construct ADA accessible campsites with required camping surfaces and access to restroom facilities with walkway.
Coldwater Lake Family Park	Parking and Walkways for Pavilion and Beach Access	Provide ADA accessible parking spaces and connecting walkways to provide access to the two pavilions, beach and restrooms in the park. Connect to the existing lakeside accessible walkway system.
Coldwater Lake Family Park	Vault Toilet Renovations	Replace the vault toilet buildings and provide ADA accessibility to and into the toilets.
Coldwater Lake Family Park	Campground Sewer System	Connect to municipal sewage system and enhance water and sewage connections to campsites.
Coldwater Lake Family Park	Hiking Trails	New pathways for hiking within the park including wayfinding and interpretive signage.
Deerfield Nature Park		
Deerfield Nature Park	Parking and Walkways to Beach and Pavilions	Provide ADA accessible parking spaces and walkways to provide access to the picnic pavilions, beach, and new play area.

Deerfield Nature Park	Trail Improvements	Improve the trail system and provide additional wayfinding and interpretive signage.
Deerfield Nature Park	Nature Center	Construct interactive/educational nature center with administrative office and modern ADA public restroom.
Deerfield Nature Park	Rustic Campground Improvements	Provide an updated ADA accessible vault toilet and rustic campground opportunities.
Deerfield Nature Park	160 Acres Property Acquisition	Acquisition of 160 acres of adjacent land to the park to expand the current park. Also known as the Fisher Annex
Maynard S. Gilmore County Park		
Maynard S. Gilmore County Park	Picnic Opportunities	Provide Concrete patio for picnic table, connecting walkways, and ADA parking.
Maynard S. Gilmore County Park	Vault Toilets	Renovated vault toilets to provide ADA accessible toilets, access walkways, and parking.
Herrick Recreation Area		
Herrick Recreation Area	Playground Revitalization	New play area and supporting ADA accessible improvements (2024 SPARKS Project)
Herrick Recreation Area	Campground Electrical Improvements	Convert existing campsite electrical services to 50 amp services.
Herrick Recreation Area	Campground Water Services	Provide individual water services to each campsite.
Herrick Recreation Area	Camp Office	Renovate and provide ADA accessibility for camp office.
Herrick Recreation Area	Accessible Camping	Create ADA accessible camp sites with appropriate surfacing connecting walkways to restroom facilities, picnic table and fire ring.
Herrick Recreation Area	Boat Launch/Fishing Dock Access	Provide ADA accessible parking, walkways, and dock improvements to provide greater accessibility to the existing floating dock.

Herrick Recreation Area	Renovate Cabins	Renovate interior and exteriors of the cabins. Provide ADA accessible interior beds and seating areas.
Herrick Recreation Area	Cabin Access	Provide ADA accessible parking, walkways, and patio in front of cabins to provide for accessible picnic table and fire ring.
Herrick Recreation Area	Vault Toilets	Renovate vault toilets and provide ADA accessibility. Construct connecting walkway to cabins and campground.
Lawrence McDonald Wildlife Sanctuary		
Lawrence McDonald Wildlife Sanctuary	Control Invasive Species	Mitigate the presence/spread of invasive species in the protected habitat.
Majeske Landing Access Site		
Majeske Landing Access Site	Picnic Opportunities	Provide new riverside ADA accessible picnic table and concrete pad, walkway, and ADA accessible parking.
Meridian County Park		
Meridian County Park	New Pathway and Overlook	New ADA accessible trail and overlook at the Chippewa River as there is not an ADA accessible trail on the site. Include ADA accessible parking.
Meridian County Park	Maintenance Vehicle Access	New pathway access for pedestrians and maintenance vehicles to newly acquired property.
Pere Marquette Rail Trail		
Pere Marquette Rail - Trail	Trail Linkage to Herrick Recreation Area	Construct new Trail linkage from the Pere-Marquette Rail Trail to the Herrick Recreation Area to provide for greater public access to the park.
Pere Marquette Rail-Trail	Trail Improvements	Provide additional signage, site furnishings, and maintenance of the paved surface.